

使用低電壓 產品更安全Using low electrical voltage insures
much safer in using our products.**御陽 · 陶瓷罐【特製版】**

YUYANG · Ceramic Cup 【Special Version】

外觀專利註冊編號：1201092.8

【刮痧機理】

痧是微絲血管中積聚的脂肪、膽固醇、鈣化物和尿酸等新陳代謝產物。

痧色鮮紅，呈點狀多為輕證，病情短。痧色暗紅呈片狀或瘀塊為重證，病情重。

血液循環障礙首先出現在血管腔最細小的微絲血管部位。由於氣血不足，臟腑功能減弱、代謝產物滯留、造成微循環障礙。發生微循環障礙的部位，營養物質和代謝產物不能正常交換，造成組織器官的代謝產物積聚。這些代謝產物成為體內的毒素，使血液流動速度減慢，進一步令代謝產物積聚。

刮痧時刮痧板向下的壓力會使含有毒素的血液由通透性紊亂的毛細血管滲漏出來，由於皮膚的屏障作用，毒素不會滲出皮膚，祇存在於皮膚和肌肉之間的淋巴系統內，就是我們看到“痧”。

「刮痧」將含有毒素的血排出於血管之外，促進了血液循環。新鮮的血液含有豐富的營養素和氧氣，毛細血管的通透性迅速恢復正常，血管瞬間的收縮反應，出血部位隨即封合，使出血立即停止。刮痧治療的方法促進了血液、淋巴液和組織間液的循環，迅速緩解了局部經脈的缺氧狀態，使病變組織器官細胞得到充足的氧氣和營養素的供應，促使細胞活化。刮痧後毒素被迫出血管，留於細胞與細胞間，淋巴系統內。淋巴液中的化學物質，巨噬細胞，白血球等能慢慢地將膽固醇凝塊，尿酸、血小板凝塊溶化，使它們由非水溶性變為水溶性，回流於血液循環系統內，經血液流往腎臟，隨尿液排出體外。

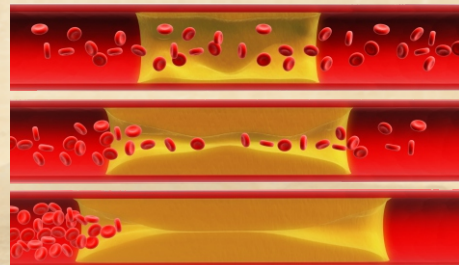
【The Principle of Guasha】

We sincerely introduce a safe and environmental Chinese therapy to you. It is called “Guasha” which means “scraping the skin”. Guasha is proved to be one of the effective but without any side effect treatments in Chinese Traditional Medicine. During the treatment some oil is applied to the part of the skin where you feel uncomfortable. Then the therapist starts “scraping” the area with a “scraper”. The scraper is made of jade or stone. Modern method is using Yu Yang Cup to scrape the skin. Yu Yang Cup can produce heat from temperature 450C to 850C. The warmth makes guasha much more effective. Very soon the skin becomes red. Red spots, toxic substances (sha sha), appear in the skin (not on the skin). The skin is very safe but no hemorrhage happens. Because the scraping is on the oily skin the patient will not feel pain – neither during nor after the treatment. The red spots will entirely disappear in 3 to 7 days.

Why can guasha remove toxic substances from your body?

The toxic substances including cholesterol, calcified compound, dead cells etc. inside your body accumulates on the wall of the capillaries and results in blood stagnant. It means that there are difficulties in the movement of blood.

By means of guasha, toxic things can be pressed out of the capillaries and go to the lymphatic system. The lymph fluids will then digest, engulf and dissolve these oily toxic substances into soluble substances. These soluble substances can then be excreted out of the body during urination.



御陽罐是以中醫理論為根據，
以「灸補元氣 刮通筋絡」的亞健康調理技術為核心。

氧化鋁陶瓷是一種強化特製陶瓷，比普通陶瓷更堅硬！

Oxidized aluminum porcelain is a strengthened porcelain. It is much harder than ordinary porcelain.

御陽罐[特制版]用御陽罐進行溫灸，溫刮，溫推，按摩，將磁療，熱療，遠紅外線的物理能量同時導入人體，能扶助人體陽氣，使陽氣循環運轉，起到保健強身，抵禦外邪，增強免疫力。

While using Yu Yang Cup, different kinds of energy like moxibustion, warm scrapping, massage, magnetic treatment, heat treatment and infra-red energy can be simultaneously applied to the body, thus helps the solar energy to circulate inside the body. Good circulation not only improves the immune system to protect the body but also resists external harms and diseases.

操作示意圖

Operation diagrams



溫通經絡 驅寒祛濕 排毒祛淤 無痛刮痧